

OTS-600 Series Optical Sources, Meters, Testers and Kits with Data Storage Capabilities

A LANscape®
Solutions Product

features and benefits |

Large LCD screen and soft key menus	Ease of use
Source and meter in one unit	Improves bi-directional testing
Auto wavelength switching and detection	Cuts typical testing time in half
USB data ports	Convenient transfer of data

The Corning Cable Systems OTS-600 Series is ideal for optical network certification. The unit is designed for testing and troubleshooting of various telecommunication networks, with ease of use achieved using a large color LCD screen, soft-key menus and a testing wizard. While maintaining all the functionality expected from an optical tester, data entry and navigation have been simplified with a keypad similar to a cell phone. The OT-600 Series models provide source and meter in one unit to improve bi-directional testing productivity, and the auto wavelength switching and detection feature cuts typical testing time in half while reducing the potential for errors. The power meter has a range of +10 to -70 dBm with 40 calibrated wavelengths. An intuitive step-by-step loss testing wizard walks the user through calculating pass/fail criteria, referencing and setting the file name.

The USB data ports provide convenient transfer of data to OTS-View Windows®-based PC Software for storage, viewing and printing of test results. The OTS-600 Series units have data storage for up to 10,000 measurement results, USB data transfer interface and a video inspection probe port. Both the OT-600 and OS-400 Series units come standard with a 650 nm visual fault locator (VFL) for convenient troubleshooting of optical networks. The OTS-600 Series units are sold individually, and as test kits. These kits include two units, an SC source adapter, and SC, LC, and ST® Compatible Connector meter port adapters. The kits are packaged in a hard case for convenient storage and protection during transit.



OTS-600 Series Light Source and Power Meter | Photo LAN1195



Modular Screen and Keypad | Photo LAN1190

OTS-600 Series Optical Sources, Meters, Testers and Kits with Data Storage Capabilities

A LANscape®
Solutions Product



Screen Shot of Step 1

Certification Wizard

The Corning Cable Systems OTS-600 Series features an intuitive Certification Wizard which takes the user through testing step-by-step.

Step 1: User selects test standard which will be used to calculate pass/fail thresholds. User can also create and save their own custom criteria where they define the connector pair loss in dB, splice loss in dB and cable loss coefficient in dB/km.

Step 2: According to the reference method selected, the user receives an on-screen diagram to perform reference step.

Step 3: User inputs cable ID/file name.

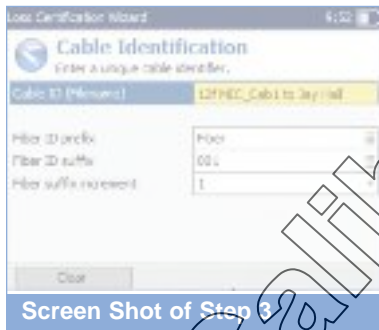
Step 4: User inputs number of connector pairs, splices, and system length.

Step 5: User can input job information.

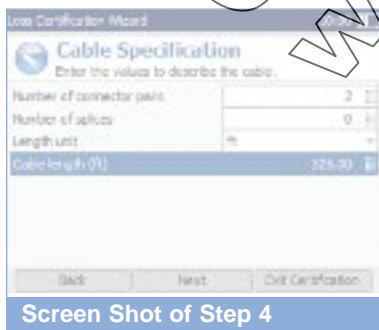
Step 6: During the testing, the results are shown in tabular format making it easy for the user to view results. The table conveniently shows any saved data for that fiber, making reviewing and updating results simple and efficient.



Screen Shot of Step 2



Screen Shot of Step 3



Screen Shot of Step 4



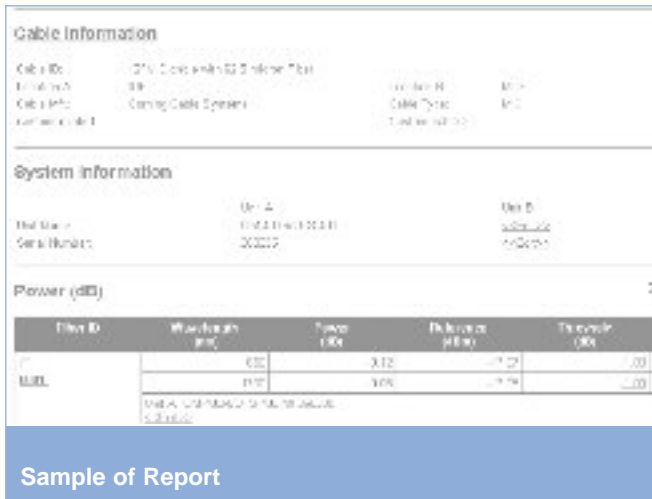
Screen Shot of Step 5



Screen Shot of Step 6

OTS-600 Series Optical Sources, Meters, Testers and Kits with Data Storage Capabilities

A LANscape®
Solutions Product



Cable Information

Cable ID:	OTN CoreLink 22 Single Fiber	Location:	Lot 1
Location:	38	Cable Type:	OTN
Cable Info:	Corning Cable Systems	Cable Type:	OTN
Customer:		Cable Type:	OTN

System Information

Unit ID:	00-4	Unit ID:	000000
Serial Number:	000000	Serial Number:	000000

Power (dB)

Test ID	Wavelength (nm)	Power (dB)	Reference (dB)	Threshold (dB)
1	1310	3.12	-1.2	-20
2	1550	3.05	-1.2	-20

Sample of Report

Reporting the Results

The OTS-600 Series comes with OTS-View reporting software for creating comprehensive certification reports. The software allows the user to save, upload, manage and print reports.

OTS-View allows users to customize the report by uploading company logos, printing only pertinent data fields and changing the pass/fail threshold. The software automatically transfers the unit model, serial number, tested date and other data from user input fields (such as Location, Customer, Cable Type, etc.)

The output of the report can be printed or stored electronically in HTML format for viewing with any web browser, CSV format for viewing with MS Excel, or TXT for viewing with a document editor.

Connector Inspection

The OTS-600 Series comes ready for connector inspection with a built-in video probe port and software. The video inspection probe (VIP) allows for the inspection of a fiber optic connector's end-face quality. The resulting images can be used as documentation of end-face quality and cleanliness.

With the purchase of the optional probe (VIPROBE-DUAL), images can be stored on the OTS-600 unit in JPG format.

A variety of precision inspection tips are available for the inspection probe. The "universal" tips are used when viewing a patch cord connector end-face or when viewing a connector before plugging it into the patch panel. The "bulkhead" tips are used when viewing a connector on the backside of patch panels through the front of the adapter. This allows for convenient inspection without removing the connector from the patch panel.



To receive a calibration and/or repair quote-RMA from R.A.E. Services Inc.

Click here>> www.raeservices.com/services/quote.htm

OTS-600 Series Optical Sources, Meters, Testers and Kits with Data Storage Capabilities

A LANscape®
Solutions Product

specifications |

Power Meter¹

Model Numbers	OM-610, OT-611MD, OT-612SD, OT-613QD
Power Meter Port	Ge
Power Range²	10 to -70 dBm
Calibrated Wavelengths (nm)	800, 820, 830, 840, 850, 860, 870, 880, 910, 980, 1270, 1280, 1290, 1300, 1310, 1320, 1330, 1340, 1350, 1370, 1390, 1410, 1430, 1450, 1460, 1470, 1480, 1490, 1500, 1510, 1520, 1530, 1540, 1550, 1560, 1570, 1580, 1590, 1600, 1610, 1620, 1630, 1640, 1650
Power Uncertainty³	± 5% ± 1 nW
Resolution⁴	± 0.01 dB
Automatic Offset Nulling	Yes
Warmup Time⁵	None
Display Units	dB/dBm/W
Automatic Wavelength Recognition⁶	Yes
Tone Detection	270 Hz, 1 kHz, 2 kHz
Battery	Li-Ion Battery with 7.5 hours typical life
Data Storage	128 Mb (>10,000 fiber results)
Warranty and Calibration Interval	3 years
Size (H x W x D)	28.4 x 12.5 x 7.8 cm (11.19 x 4.83 x 3.06 in)
Weight	0.98 kg (2.16 lb)
Operating Temperature	0° to +50°C (+32° to +122°F)
Storage Temperature	-20° to +70°C (-4° to +158°F)
Relative Humidity	5% to 95% non-condensing

¹Guaranteed unless otherwise specified. All specifications valid at 1550 nm and 23°C ± 1°C, with an FC connector.

²In CW mode; sensitivity defined as 6 x RMS noise level.

³For calibrated wavelengths.

⁴From 10 dBm to -60 dBm.

⁵For ± 0.05 dB and temperatures of > 18°C.

⁶At 850 nm, 1300 nm, 1310 nm, 1490 nm, 1550 nm and 1625 nm for power of > -50 dBm.

OTS-600 Series Optical Sources, Meters, Testers and Kits with Data Storage Capabilities

A LANscape®
Solutions Product

specifications | (continued)

Optical Source¹

Model Numbers	OS-403RD OS-4RMDSD	OS-404RXD OS-4RMDSD
Central Wavelengths	850 ± 25 nm 1300 -10/+50 nm	1310 ± 20 nm 1550 ± 20 nm
Spectral Width ²	50 nm (850 nm) 135 nm (1300 nm)	≤ 5 nm (1310 nm) ≤ 5 nm (1550 nm)
Output Power ³	≥ -20 dBm (850 nm) ≥ -20 dBm (1300 nm)	≥ 1 dBm (1310 nm) ≥ 1 dBm (1550 nm)
Auto Wavelength Switching	Yes	Yes
Tone Generation	270 Hz, 1 kHz, 2 kHz	270 Hz, 1 kHz, 2 kHz
Battery Life	50 hours	50 hours
Safety	Class 1M Laser Product	Class 1M Laser Product
Visual Fault Locator (VFL) ³		
Emitter Type	Laser	Laser
Wavelength	650 nm	650 nm
Output Power	3 dBm	3 dBm
Safety	Class 3R Laser Product	Class 3R Laser Product
General		
Size (H x W x D)	19.0 x 10.0 x 6.2 cm (7.5 x 4.0 x 2.5 in)	19.0 x 10.0 x 6.2 cm (7.5 x 4.0 x 2.5 in)
Weight	0.48 kg (1.1 lb)	0.48 kg (1.1 lb)
Warranty and Calibration Interval	3 years	3 years
Operating Temperature	0° to +50°C (+32° to +122°F)	0° to +50°C (+32° to +122°F)
Storage Temperature	-20° to +70°C (-4° to +158°F)	-20° to +70°C (-4° to +158°F)
Relative Humidity	5% to 95% non-condensing	5% to 95% non-condensing

¹Guaranteed unless otherwise specified. All specifications valid at 23° ± 1°C, with an FC connector.

²Values are RMS for FP lasers and -3 dB width for LEDs.

³Typical values when coupled to detector with air gap.

To receive a calibration and/or repair quote-RMA from R.A.E. Services Inc.

Click here>> www.raeservices.com/services/quote.htm

OTS-600 Series Optical Sources, Meters, Testers and Kits with Data Storage Capabilities

A LANscape®
Solutions Product

specifications | (continued)

Optical Tester¹

Model Numbers	OT-611MD OT-613QD	OT-612SD
Central Wavelengths	850 ± 25 nm 1300 -10/+50 nm	1310 ± 20 nm 1550 ± 20 nm
Spectral Width²	50 nm (850 nm) 135 nm (1300 nm)	≤ 5 nm (1310 nm) ≤ 5 nm (1550 nm)
Output Power	≥ -20 dBm (850 nm) ≥ -20 dBm (1300 nm)	≥ -1 dBm (1310 nm) ≥ -1 dBm (1550 nm)
Auto Wavelength Switching	Yes	Yes
Tone Generation	270 Hz, 1 kHz, 2 kHz	270 Hz, 1 kHz, 2 kHz
Safety	Class 1M Laser Product	Class 1M Laser Product

¹Guaranteed unless otherwise specified. All specifications valid at 23° ± 1°C, with an FC connector.

²Values are RMS for FP lasers and -3 dB width for LEDs.

Calibration & Repair
www.raeservices.com

To receive a calibration and/or repair quote-RMA from R.A.E. Services Inc.

Click here>> www.raeservices.com/services/quote.htm

OTS-600 Series Optical Sources, Meters, Testers and Kits with Data Storage Capabilities

A LANscape®
Solutions Product

specifications | (continued)

Detector

Model Numbers	OT-611MD OT-613QD	OT-612SD
Power Range ¹	10 to -70 dBm	10 to -70 dBm
Calibrated Wavelengths (nm)	800, 820, 830, 840, 850, 860, 870, 880, 910, 980, 1270, 1280, 1290, 1300, 1310, 1320, 1330, 1340, 1350, 1370, 1390, 1410, 1430, 1450, 1460, 1470, 1480, 1490, 1500, 1510, 1520, 1530, 1540, 1550, 1560, 1570, 1580, 1590, 1600, 1610, 1620, 1630, 1640, 1650	
Power Uncertainty ²	± 5% ± 1 nW	
Resolution ³	± 0.01 dB	
Automatic Offset Nulling	Yes	
Display Units	dB/dBm/W	
Automatic Wavelength Recognition ⁴	Yes	
Tone Detection	270 Hz, 1 kHz, 2 kHz	
Battery	Li-Ion Battery with 7.5 hours typical life	
Data Storage	128 Mb (> 10,000 fiber results)	
Warranty and Calibration Interval	3 years	
Size (H x W x D)	28.4 x 12.5 x 7.8 cm (11.19 x 4.83 x 3.06 in)	
Weight	0.98 kg (2.16 lb)	
Operating Temperature	0° to +50°C (+32° to +122°F)	
Storage Temperature	-20° to +70°C (-4° to +158°F)	
Relative Humidity	5% to 95% non-condensing	

¹In CW mode; sensitivity defined as 6 x RMS noise level.

²For calibrated wavelengths.

³From 10 dBm to -60 dBm.

⁴At 850 nm, 1300 nm, 1310 nm, 1490 nm, 1550 nm and 1625 nm for power of > -50 dBm.

To receive a calibration and/or repair quote-RMA from R.A.E. Services Inc.

Click here>> www.raeservices.com/services/quote.htm

OTS-600 Series Optical Sources, Meters, Testers and Kits with Data Storage Capabilities

A LANscape®
Solutions Product

specifications | (continued)

Visual Fault Locator (VFL)

Central Wavelength	Laser, 650 nm ± 10 nm
Pulse	Continuous wave (CW)
Typical Output Power¹	3 dBm (2 mW)
Safety	Class 3R Laser Product
General	
Size (H x W x D)	28.4 x 12.5 x 7.8 cm (11.19 x 4.83 x 3.06 in)
Weight	0.98 kg (2.16 lb)
Operating Temperature	0° to +50°C (+32° to +122°F)
Storage Temperature	-20° to +70°C (-4° to +158°F)
Relative Humidity	5% to 95% non-condensing

¹Typical values when coupled to detector with air gap.

Calibration & Repair
www.raeservices.com

OTS-600 Series Optical Sources, Meters, Testers and Kits with Data Storage Capabilities

A LANscape®
Solutions Product

ordering information |

Part Number	Description
Optical Source	
OS-403RD	Multimode Optical Source (850/1300 nm LED) with integrated 650 nm VFL; Li-Ion rechargeable battery and AC power adapter; (1) SC source port adapter, (1) wrist strap and user's manual
OS-404RXD	Single-mode Optical Source (1310/1550 nm laser) with integrated 650 nm VFL; Li-Ion rechargeable battery and AC power adapter; (1) SC source port adapter, (1) wrist strap and user's manual
OS-4RMDS	Single-mode/Multimode Optical Source (850/1300 nm LED and 1310/1550 nm laser) with integrated 650 nm VFL; Li-Ion rechargeable battery and AC power adapter; (2) SC source port adapters, (1) wrist strap and user's manual
Optical Meter	
OM-610	Optical Power Meter with 40 calibrated wavelengths; data storage for 10,000 traces; USB cable for data transfer; OTS-View software; Li-Ion rechargeable battery and AC power adapter; (1) SC meter port adapter, (1) wrist strap and user's manual
Optical Tester	
OT-611MD	Multimode 2-Fiber Tester with 850/1300 nm LED source, optical power meter, and integrated 650 nm VFL; (1) SC source port adapter, (1) SC meter port adapter, USB cable for data transfer; OTS-View software; Li-Ion rechargeable battery and AC power adapter; (1) wrist strap and user's manual
OT-612SD	Single-mode 2-Fiber Tester with 1310/1550 nm laser source, optical power meter, and integrated 650 nm VFL; (1) SC source port adapter, (1) SC meter port adapter, USB cable for data transfer; OTS-View software; Li-Ion rechargeable battery and AC power adapter; (1) wrist strap and user's manual
OT-613QD	Single-mode/Multimode 2-Fiber Tester with 850/1300 nm LED and 1310/1550 nm laser sources, optical power meter, and integrated 650 nm VFL; (2) SC source port adapter, (1) SC meter port adapter, USB cable for data transfer; OTS-View software; Li-Ion rechargeable battery and AC power adapter; (1) wrist strap and user's manual

Calibration & Repair
www.raeservices.com

OTS-600 Series Optical Sources, Meters, Testers and Kits with Data Storage Capabilities

A LANscape®
Solutions Product

[ordering information](#) | (continued)

Part Number	Description
Test Kits	
OTS-600MD	Multimode Test Kit with OS-403RD (850/1300 nm LED) source and integrated 650 nm VFL; OM-610 power meter; (2) Li-Ion rechargeable batteries and (2) AC power adapters; USB cable for data transfer; OTS-View software (1) SC source port adapter, (1) SC meter adapter, (1) ST® Compatible meter adapter, (1) LC meter adapter, (2) wrist straps, cleaning supplies, multimode testing mandrels, hard transit case and user's manual
OTS-600SD	Single-mode Test Kit with OS-404RXD (1310/1550 nm laser) source and integrated 650 nm VFL; OM-610 power meter; (2) Li-Ion rechargeable batteries and (2) AC power adapters; USB cable for data transfer; OTS-View software (1) SC source port adapter, (1) SC meter adapter, (1) ST Compatible meter adapter, (1) LC meter adapter, (2) wrist straps, cleaning supplies, hard transit case and user's manual
OTS-6MDSD	Single-mode/Multimode Test Kit with OS-4RMDS (850/1300 nm LED and 1310/1550 nm laser) source and integrated 650 nm VFL; OM-610 power meter; (2) Li-Ion rechargeable batteries and (2) AC power adapters; USB cable for data transfer; OTS-View software (1) SC source port adapter, (1) SC meter adapter, (1) ST Compatible meter adapter, (1) LC meter adapter, (2) wrist straps, cleaning supplies, multimode testing mandrels, hard transit case and user's manual
OTS-611MD	Multimode OLTS Test Kit for bi-directional testing with (2) OT-611MD testers (850/1300 nm LED) with integrated 650 nm VFL and power meter; (2) Li-Ion rechargeable batteries and (2) AC power adapters; (2) USB cables for data transfer; OTS-View software (2) SC source port adapters, (2) SC meter adapters, (2) ST Compatible meter adapters, (2) LC meter adapters, (2) wrist straps, cleaning supplies, multimode testing mandrels, hard transit case and user's manual
OTS-612SD	Single-mode OLTS Test Kit for bi-directional testing with (2) OT-612SD testers (1310/1550 nm laser) with integrated 650 nm VFL and power meter; (2) Li-Ion rechargeable batteries and (2) AC power adapters; (2) USB cables for data transfer; OTS-View software (2) SC source port adapters, (2) SC meter adapters, (2) ST Compatible meter adapter, (2) LC meter adapters, (2) wrist straps, cleaning supplies, and hard transit case and user's manual
OTS-613QD	Single-mode/Multimode OLTS Test Kit for bi-directional testing with (2) OT-613QD testers (850/1300 nm LED and 1310/1550 nm laser sources) with integrated 650 nm VFLs and power meters; (2) Li-Ion rechargeable batteries and (2) AC power adapters; (2) USB cables for data transfer; OTS-View software (4) SC source port adapters, (2) SC meter adapters, (2) ST Compatible meter adapters, (2) LC meter adapters, (2) wrist straps, cleaning supplies, multimode testing mandrels, hard transit case and user's manual

To receive a calibration and/or repair quote-RMA from R.A.E. Services Inc.

Click here>> www.raeservices.com/services/quote.htm

OTS-600 Series Optical Sources, Meters, Testers and Kits with Data Storage Capabilities

A LANscape®
Solutions Product

[ordering information](#) | (continued)

Part Number	Description
Test Kits with Video Inspection Probe	
OTS-600MD-P	OTS-600MD Kit with Video Inspection Probe (VIP); includes bulkhead tip set for SC, FC and universal 2.5 mm
OTS-600SD-P	OTS-600SD Kit with Video Inspection Probe (VIP); includes bulkhead tip set for SC, FC and universal 2.5 mm
OTS-6MDSD-P	OTS-6MDSD Kit with Video Inspection Probe (VIP); includes bulkhead tip set for SC, FC and universal 2.5 mm
OTS-611MD-P	OTS-611MD Kit with Video Inspection Probe (VIP); includes bulkhead tip set for SC, FC and universal 2.5 mm
OTS-612SD-P	OTS-612SD Kit with Video Inspection Probe (VIP); includes bulkhead tip set for SC, FC and universal 2.5 mm
OTS-613QD-P	OTS-613QD Kit with Video Inspection Probe (VIP); includes bulkhead tip set for SC, FC and universal 2.5 mm

Calibration & Repair
www.raeservices.com

To receive a calibration and/or repair quote-RMA from R.A.E. Services Inc.

Click here>> www.raeservices.com/services/quote.htm

OTS-600 Series Optical Sources, Meters, Testers and Kits with Data Storage Capabilities

A LANscape®
Solutions Product

[ordering information](#) | (continued)

Part Number	Description
Accessories	
VIPROBE-DUAL	Video Inspection Probe for use with OTS-600; 200x/400x magnification with coaxial lighting; includes bulkhead tips for SC, FC and universal 2.5 mm
UI-SC	Universal Interface Source Connector Adapter, SC
UI-ST	Universal Interface Source Connector Adapter, ST® Compatible Connector
UI-FC	Universal Interface Source Connector Adapter, FC
OA-SC	Power Meter Connector Adapter, SC
OA-ST	Power Meter Connector Adapter, ST Compatible Connector
OA-FC	Power Meter Connector Adapter, FC
OA-LC	Power Meter Connector Adapter, LC
OA-MTRJ	Power Meter Connector Adapter, MT-RJ
PS-9-1	AC Power Adapter for OS-400 Series (OS-403RD, OS-404RXD and OS-4RMDSD)
400-BATT-COVER	OS-400 Series Battery Compartment Cover (OS-403RD, OS-404RXD and OS-4RMDSD)
400-OTS-BATT	OS-400 Series Li-Ion Battery (OS-403RD, OS-404RXD and OS-4RMDSD)
PS-600	AC Power Adapter for OT-600 and OM-600 Series (OM-610, OT-613QD, etc.)
600-OTS-BATT	OT-600 and OM-600 Series Battery (OM-610, OT-613QD, etc.)
CASE-HH-600	Hard-Shell Transit Case for (2) 600 Series instruments
OTS-COMBOMAN	Set of Mandrels for loss testing of 50 µm and 62.5 µm multimode fiber

Corning Cable Systems LLC • PO Box 489 • Hickory, NC 28603-0489 USA
800-743-2675 • FAX: 828-901-5973 • International: +1-828-901-5000 • www.corning.com/cablesystems

Corning Cable Systems reserves the right to improve, enhance and modify the features and specifications of Corning Cable Systems products without prior notification. LANscape is a registered trademark of Corning Cable Systems Brands, Inc. ST is a registered trademark of Lucent Technologies. All other trademarks are the properties of their respective owners. Corning Cable Systems is ISO 9001 certified. ©2008, 2009 Corning Cable Systems. All rights reserved. Published in the USA. LAN-942-EN / September 2009