

To receive a calibration and/or repair quote-RMA from R.A.E. Services Inc.  
Click here>> [www.raeservices.com/services/quote.htm](http://www.raeservices.com/services/quote.htm)



## Acterna FST-2310 TestPad SONET Services Module

The Acterna FST-2310 TestPad is an all-in-one testing solution that performs SONET, SDH, T-carrier, data, and circuit-switched testing to meet the varied testing requirements of mobile technicians. Its modular architecture protects long-term investment by providing the flexibility, scalability, and upgradeability to support evolving test needs.

Most tests performed using the FST-2310 can be done in only a few button pushes, without the need to sift through hidden setup menus. Additionally, because technicians need only minimal training to use the FST-2310, testing objectives are addressed quickly and the cost of ownership is significantly reduced.

### Highlights

- SONET/T-carrier transmission testing from DS1 to OC-48 rates
- SDH transmission testing at STM-16, STM-4 and STM-1 rates
- Circuit-switched testing capabilities including GR-303, ISDN, signaling, voice frequency (VF), and digital data service (DDS)
- ATM testing capabilities including CBR/VBR traffic generation, QoS measurements, 0.191 test cell generation, and support for OAM alarm and loopback cells
- Engineered for mobile technicians with rugged construction, lightweight design, and battery-powered operation
- Process oriented testing features such as test scripting and remote control operation

**Key features of the FXT-2310 include:**

**Application-driven icons**

Test application buttons are labeled with icons that clearly depict the way the test is performed on the circuit; for example, select the “MON/THRU” icon when performing circuit-monitoring tests – select the “TERM” icon when performing circuit-terminating tests. The icons and quick setup buttons enable technicians to use the module effectively with very little training (figure 1).

**Simultaneous results analysis for different signal rates**

Identify the source of problems quickly by using the FST-2310’s dual results window to analyze results from different signal rates simultaneously. Simultaneous results analysis can also be performed on different signal results (for example, level and bit errors) allowing for easy results correlation and quick problem identification.

**Autoconfiguration**

Support for autoconfiguration is provided for all key applications. Autoconfiguration is capable of setting different test parameters, such as framing and pattern, as well as detecting the signal’s multiplexed composition. This enables users to reduce the time required for test setup. Additionally, the FST-2310 has the ability to save and store up to 10 test set configurations that can be recalled for future use.

**Remote control**

Remotely configure tests and analyze results in detail using the remote control GUI option. This allows technicians to conveniently operate the module from a remote location using the FST-2310’s graphical user interface (GUI) on a remote PC. The remote control GUI feature enables technicians to connect to the FST-2310 through the PCMCIA serial or modem card to perform tests and collect test results.

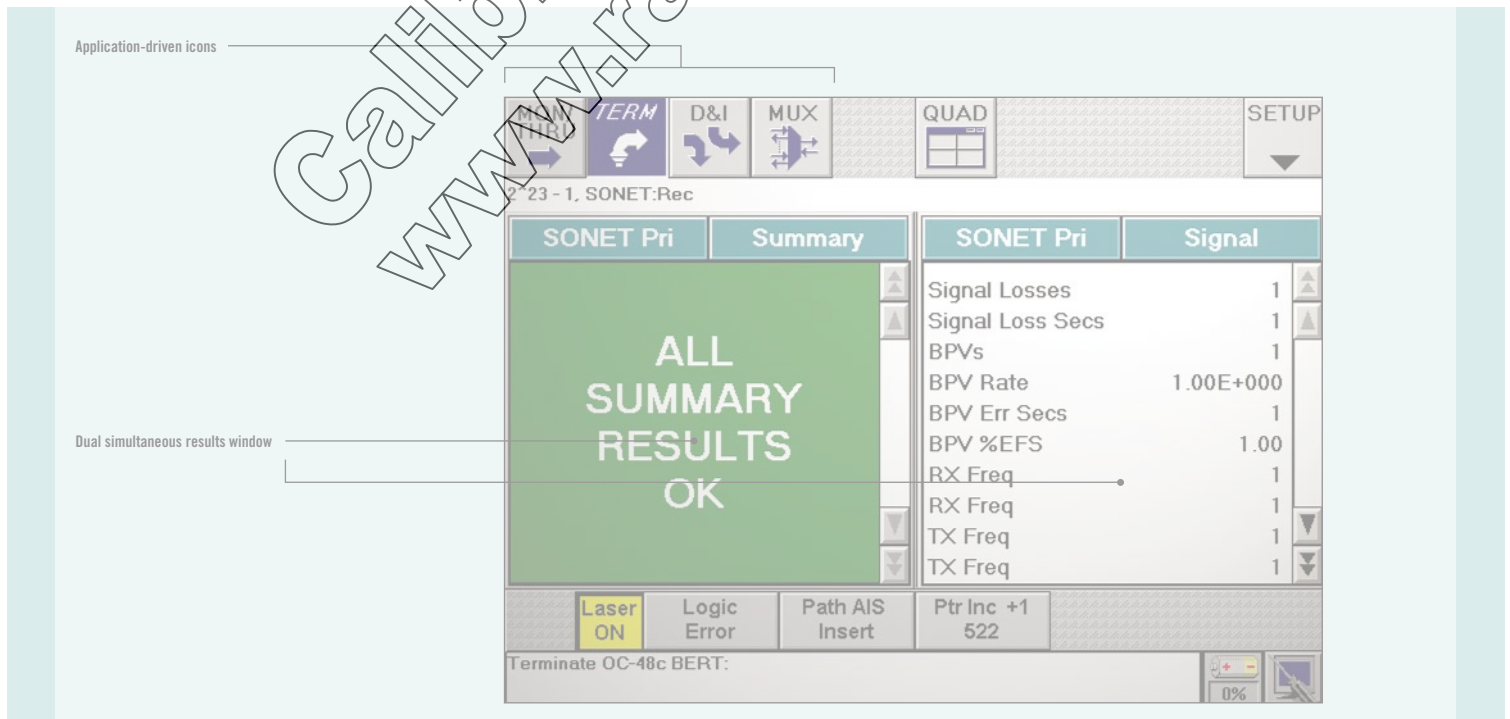


Figure 1 Application-driven icons and simultaneous results

**Scripting and automation**

Reduce setup time and increase efficiency of tests by running pre-programmed scripts from a PCMCIA card. The DS1/DS3/SONET script libraries supported on the FST-2310 enable technicians to perform tests quickly and verify test results against specific criteria for a simple PASS/FAIL result. Scripts can also be customized to meet the methods and procedures of any service provider (figure 2).

**VT100 emulation**

Perform VT100 terminal emulation to connect to network elements to configure NE parameters and monitor available statistics (figure 3).

**Timed prints and error logs**

Print results every few hours, at the end of a test, or at the occurrence of an error using the FST-2310's print features.

**Through mode for all rates**

Gain access to test circuits (DS1 through OC-48) even when no test access point is provided. The FST-2310's through-mode capability monitors test circuits by unobtrusively channeling network traffic through the test instrument.

**Physical, active port, and laser active LEDs**

A bright array of physical LEDs on the front panel summarizes results and clearly identifies errors detected during a test. Active port LEDs on the top panel indicate the interface(s) to use for specific tests – thus eliminating user error when connecting the FST-2310 to the network. Laser-active LEDs indicate when the transmit laser is active and when laser pulses are received.

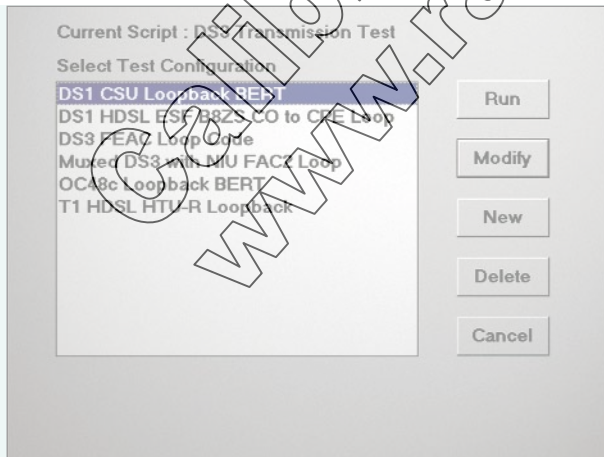


figure 2 Use automation scripts to verify network performance with the touch of a single button

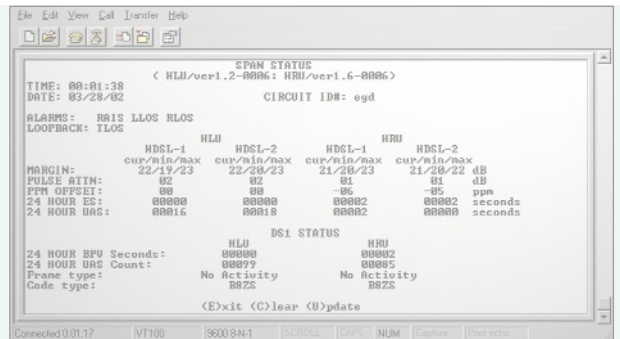


figure 3 Perform VT100 emulation to configure network elements and monitor statistics

## Applications

### SONET analysis

The FST-2310 can be used to verify end-to-end network performance via BER testing at SONET rates up to OC-48 as well as to analyze SONET network performance under abnormal conditions by simulating pointer justifications and inserting error and alarm conditions. Users can also manipulate and analyze all applicable SONET overhead bytes to verify network element performance (for example, pointer adjustments, alarms, DCC bytes, SONET sync messages, and K1/K2 bytes) (figure 4).

Qualify the performance of SONET networks quickly and easily with the FST-2310's intuitive GUI. By supporting various payload mappings, the FST-2310 enables testing and verification of individual payloads inside an OC-n signal (DS1, DS3, multiplexed DS3, VT1.5, OC-n subrates).

Additional functionality includes the ability to drop and insert all mappings (OC-12/3/DS3/DS1) from an OC-48 signal. Monitor individual DS1, DS3, or OC-n subrate payloads within SONET signals for analysis, and verify signal power and signal frequency of a received signal. Technicians can also name and identify trace messages and payloads by using the FST-2310's user-configurable path trace messages.

### SDH analysis

The SDH functionality on the FST-2310 enables performance verification of SDH networks at the STM-16, STM-4 and STM-1 rates. The FST-2310 supports performance testing of individual payloads inside an STM-n signal (STM-16c, STM-4c, STM-1c). Ensure proper network operation with error/ alarm analysis as well as the manipulation/analysis of all applicable SDH overhead bytes. Correct network timing can be monitored through pointer adjustment measurements.

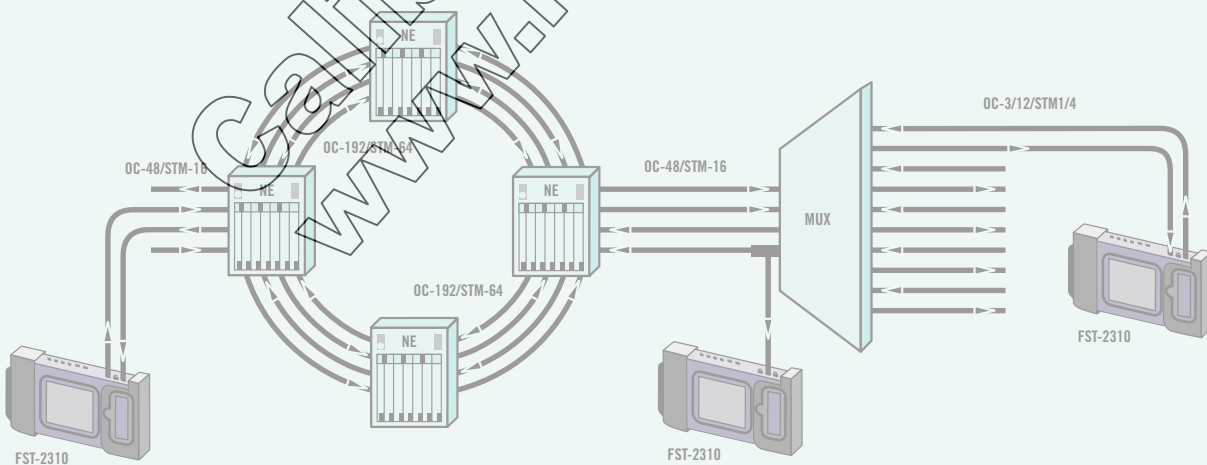


figure 4 Verify network performance at various payload mappings, including DS1, DS3, VT1.5, OC-n subrates, and SDH networks. NIST, ISO, IEEE, ANSI, IEC, MIL-STD by [www.raeservices.com](http://www.raeservices.com)

#### DS3 analysis

Ensure DS3 network performance by performing end-to-end BER testing and measuring frequency and signal levels on the circuit under test. Technicians can qualify networks for accurate multiplexed operation by performing BER testing on one or all DS1 channels transmitted by a DS3 multiplexer. Access to the DS3 signal is provided from the DS3 interface or a DS3 signal embedded in an STS-1, OC-3, OC-12, or OC-48 circuit. Reduce total testing time on DS3 circuits by using the dual DS3 receivers to perform bidirectional monitoring, allowing for quick isolation of problems (figure 5).

#### DS1 analysis

Verify T1 network performance with the FST-2310's integrated BER, signal, alarm, and timing tests. A wide range of stress test patterns, combined with bidirectional monitoring, enables technicians to identify and sectionalize circuit problems and quickly qualify circuits for service acceptance. Users can perform VF analysis of voice trunks with the FST-2310's support of VF levels and tones measurements. The drop-and-insert test feature qualifies a DS0 channel while the T1 circuit remains in service. The FST-2310 isolates sources of timing errors by using an external bits clock input to identify network synchronization problems. Access to the DS1 signal is provided from the T1 interface or from the DS1 signal embedded in a DS3, STS-1, OC-3, OC-12, or OC-48 circuit (figure 5).

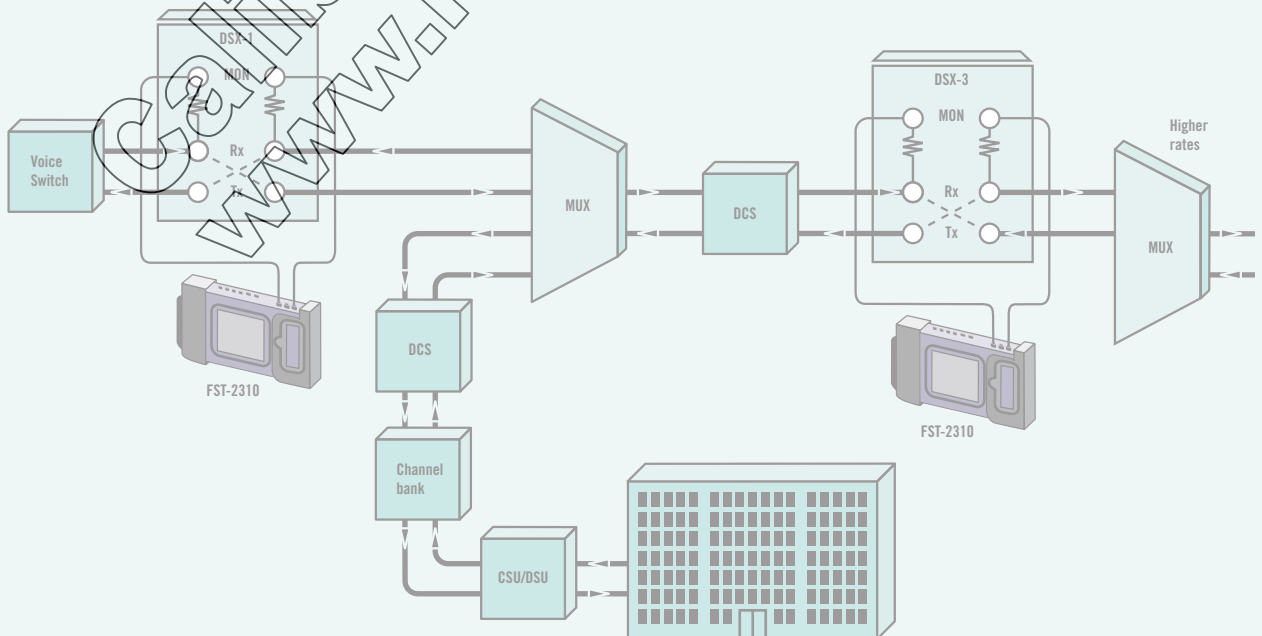


figure 5 Perform bidirectional monitoring on DS3 and DS1 signals

NIST, ISO, IEC, ANSI, NCS, MIL-STD by [www.raeservices.com](http://www.raeservices.com)

**ATM analysis**

Analyze ATM circuits at OC-12c, OC-3c, DS3, and DS1 rates. Generate multiple cell streams to perform key quality of service measurements (cell delay variation, cell error ratio, cell loss ratio, round-trip delay), cell statistics and bandwidth utilization. The FST-2310 supports OAM alarm (VP/VCAIS/RDI) and loopback cells as well as modification of the VPI/VCI, PTI, CLP, and GFC fields of the cell header. Also supported are the 0.191 ITU standard test cell and the ability to save up to four transmit profiles (figure 6).

**GR-303 protocol link analysis**

Perform basic GR-303 protocol link analysis in Monitor/Through mode at the 64-K data rate on a call processing (TMC/CSC) or operations channel (EOC).

Analysis is conducted unobtrusively to decode messages on the system's protocol links. Technicians can monitor call statistics, filter call control messages based on cause code, or monitor layer-2 packet statistics to qualify proper functioning of the GR-303 interface. The GR-303 option also provides support for tracing calls based on filter criteria (for example call reference value – CRV) established through the test setup. Once the call is traced, clicking on the appropriate call provides decodes of the protocol message that were exchanged to establish the call.

**ISDN PRI testing**

Emulate an ISDN TE device, such as a PBX, to place and receive voice and data calls on an ISDN PRI circuit. The Acterna FST-2310 TestPad enables users to monitor and capture signaling messages exchanged on the D-channel. Caller ID/Caller ID blocking, 21-digit dialing and DTMF digits are all supported. Call status results and progress reports provide an additional level of detail to ensure calls are successfully established (figure 7).

The FST-2310's ISDN functionality supports AT&T specific call control (GSS, DM8-100, National ISDN-II). The FST-2310 can be used for backup D-channel testing to switch between standby and In-service D-channels, bidirectional monitoring with full text decodes for protocol messages exchanged on the D-channel, as well as testing of multiple DS1 lines with NFAS testing.

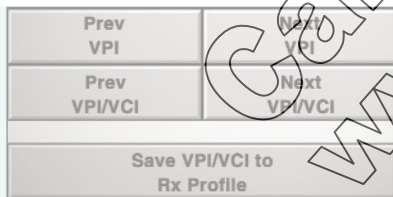


figure 6 Search for ATM traffic on DS1, DS3, OC-3, or OC-12 circuits

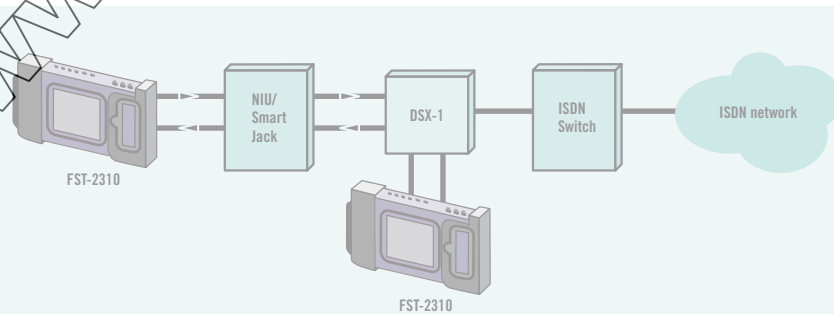


figure 7 Perform ISDN terminal emulation as well as monitor ISDN links from DS1, DS3 and STS-1 circuits

### Signaling analysis

Emulate the PBX/switch for placing and receiving calls and monitor signaling digits for detailed analysis. The FST-2310 signaling features include E&M, loop start, and ground start support for placing and receiving calls. The FST-2310 provides support for DP, DTMF, and MF digit recognition. It can also perform interevent and interdigit delay measurements as well as event and digit duration measurements.

The signaling (ABCD) bits for all DS0s can be displayed in one simple result window. A speaker, microphone, and handset are provided for verifying voice integrity.

### Loopback applications

Sectionalize T1/T3 circuits with the FST-2310 and its support for NIU/CSU loopback and user-programmable loop codes. The FST-2310 can sectionalize the network and verify the functionality of intelligent line-equipment and repeaters with its ability to loopback T1/T3 network elements (figure 8).

### Online help

The easy-to-use online help screens provide information on product descriptions, common applications, product specifications, cabling diagrams, and contact information (figure 9).

### Software support

All Acterna products are continually being updated through software enhancements. The Acterna FST-2310 TestPad, in particular, keeps pace with advancing technologies through enhanced software revisions to add value to its users and customers. Software upgrades are done in the field in minutes through the PCMCIA card interface.



figure 8 Send loop codes to a T1 NIU/CSU

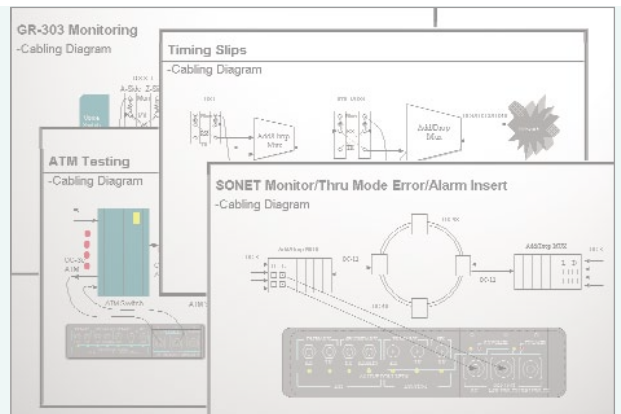


figure 9 Online help provides quick cards and cabling diagrams

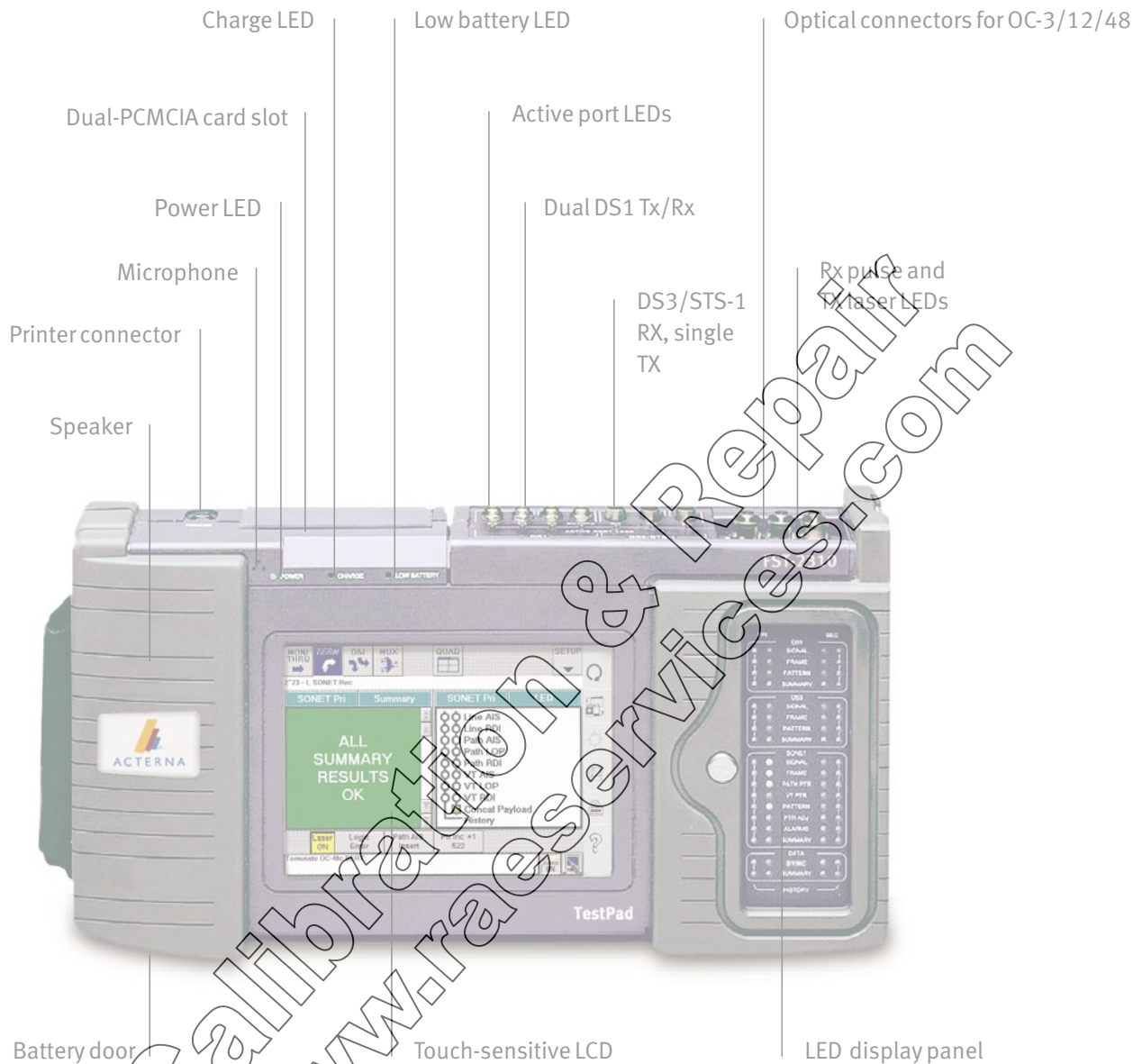


figure 10 Physical characteristics of the PST-2310



To receive a calibration and/or repair quote-RMA from R.A.E. Services Inc.  
 Click here>> [www.raeservices.com/services/quote.htm](http://www.raeservices.com/services/quote.htm)

Technical specifications	
<b>Physical characteristics</b>	
Overall dimensions	7.5 x 11.5 x 2.25 in (19 x 29.2 x 5.7 cm)
Weight	5 lb (2.27 kg), with battery
<b>Environment</b>	
<b>Temperature range</b>	
Operating	32°F to 113°F (0°C to 45°C)
Storage	-4°F to 158°F (-20°C to 70°C)
Shock and vibration	Meets IEEE-743
<b>Electrical</b>	
Battery type	10.8 V Nickel-Metal-Hydrate (NiMH)
Operating time	Up to 1.5 hours for performing DS3/DS1 tests
Recharging period	Maximum 1.5 hours with unit off
AC adapter	19 VDC, 2.6 amps 90-240 VAC, 45-65 Hz

Optical specifications for OC-48	
<b>Optical connectors</b>	
1 OC-48 Receive – FC, SC, or ST	
1 OC-48 1310 nm High-Power Transmit – FC, SC, or ST	
1 OC-48 1550 nm High-Power Transmit – FC, SC, or ST (dual wavelength configurations only)	
<b>Transmitter</b>	
Single/multimode fiber compatible	
Wavelength	1310 nm/1550 nm
Clock frequency accuracy	±3 ppm
High-power TX output	+3 dBm to -2 dBm
<b>Receiver</b>	
Single/multimode fiber compatible	
Dual wavelength	1310 nm/1550 nm
Rx clock frequency	±8 ppm
Receive level sensitivity	-8 dBm to -28 dBm
Receiver shutdown	-6 dBm or higher

Optical specifications for OC-3/12	
<b>Optical connectors</b>	
1 OC-3/12 Receive – FC, SC, or ST	
1 OC-3/12 Transmit – FC, SC, or ST	
<b>Transmit signal</b>	
Single/multimode fiber compatible	
Average output power	-8 dBm to -15 dBm (+3 dBm to -2 dBm on OC-48-equipped units)
Eye diagram	Per Bell Core GR-253-C-1995
Clock frequency accuracy	±3 ppm ±1 ppm per year
<b>Receive signal</b>	
Single/multimode fiber compatible	
Average input power receive level	-8 dBm to -28 dBm
Frequency range	±500 ppm
Clock frequency accuracy	±3 ppm ±1 ppm per year
Jitter tolerance	Per Bell Core GR-253-CORE-1995
<b>Level measurement</b>	
Range	-5 to -45 dBm
Accuracy	±2 dB
Resolution	±0.1 dB

Input specifications for DS3 AND STS-1	
Connector type	WECO 560A jack
<b>Input level</b>	
High	Accepts nominal 1.2 Vp, 0 ft of cable from high source
DSX	Accepts nominal 0.6 Vp, 450 ft of cable from high source
Low	Accepts nominal 0.3 Vp, 900 ft of cable from high source
Maximum signal level without errors with 1.7 Vp	
Minimum signal level without errors with 0.025 Vp	
Maximum input signal level with 2.5 Vp	
Input impedance	75 ohms nominal, unbalanced to ground
Jitter tolerance	Exceeds TR-TSY-000499

Output specifications for DS3 AND STS-1	
Connector type	WECO 560A jack
<b>Output level</b>	
High	Nominal 1.2 Vp; signal meets ANSI T1.102-1993 and ITU-T G.703 when subject to 450 ft of cable loss
DSX	Nominal 0.61 Vp; signal meets ANSI T1.102-1993 and ITU-T G.703
Low	Nominal 0.31 Vp
Output impedance	75 ohms nominal, unbalanced to ground
Jitter tolerance	Per TR-TSY-000499
<b>Frequency</b>	
DS3	44.736 MHz ±10 ppm
STS-1	51.84 MHz ±3 ppm ±1 ppm per year

Input specifications for DS1	
Connector type	Bantam jack
Frequency	1.544 MHz ±50 ppm
<b>Impedance</b>	
BRIDGE	1000 ohms minimum
TERM	100 ohms ±5%
DSX-MON	100 ohms ±5%
<b>Range</b>	
BRIDGE	+6 to -35.0 dBdsx
TERM	+6 to -35.0 dBdsx
DSX-MON	-10 to -26.0 dBdsx of resistive loss
Jitter tolerance	Per Bell Pub 62411-1990
<b>Accuracy</b>	
<b>Receive level measurement</b>	
From 6 dBdsx to -15 dBdsx, accuracy of ±1 dB	
From -16 dBdsx to -30 dBdsx, accuracy of ±2 dB	
From -31 dBdsx to -40 dBdsx, accuracy of ±3 dB	
<b>Simplex current measurement</b>	
±2% or ±2 mA to 60 mA	
±3% or ±3 mA from 61 mA to 175 mA	
<b>Frequency measurement accuracy</b>	
±3 ppm ±1 ppm/year	

Output specifications for DS1	
Connector type	Bantam jack
<b>LBO level</b>	
Line build-out of 0, -7.5, -15.0, and -22.5 dB of cable loss at 772 Hz	
<b>LBO tolerance</b>	
±2 dB for -22.5 at 772 kHz	
±1 dB for 0, -7.5, and -15 at 772 kHz	
Internal timing	±3 ppm ±1 ppm per year
Line codes	AMI or B8ZS
Error insert type	Logic, BPV, or Frame
Pulse shape	Per applicable specifications

To receive a calibration and/or repair quote-RMA from R.A.E. Services Inc.  
 Click here>> [www.raeservices.com/services/quote.htm](http://www.raeservices.com/services/quote.htm)

Sources
Specifications/recommendations used
IEEE 743
ITU-T recommendation G.703
AT&T publications CB113, CB119, CB132, CB143
ANSI T1.403-1995
AT&T publications PUB62508, PUB62411
ITU-T recommendation G.824
TR-TSY-000499, category 1.2
ANSI T1.102-1993
Bellcore GR253-Core-1995
Bell Pub 62411-1990

Ordering information	
User Interface Module	
FST-2310 Application Modules	
TestPad 2000 (includes soft carrying case, kickstand, AC adapter/charger, printer cable)	2000-SV3
DS1 Communications Analyzer	TB2310-DS1
DS3/DS1 Communications Analyzer	TB2310-DS3
STS-1/DS3/DS1 Communications Analyzer	TB2310-STS1
OC3/3c, STS-1/DS3/DS1 Communications Analyzer	TB2310-OC3XX*
OC12/12c, OC3/3c, STS-1/DS3/DS1 Communications Analyzer	TB2310-OC12XX*
OC48/48c, OC12/12c, OC3/3c, STS-1/DS3/DS1 Communications Analyzer	TB2310-OC48XX*
OC48/48c, OC12/12c, OC3/3c, STS-1/DS3/DS1 Communications Analyzer with 1310 nm and 1550 nm laser	TB2310-OC48DXX*

\*Specify type of optical connector: OC, OC3, or ST

Analyzer Options	
Advanced stress patterns	TB2310-ASP
ATM analysis for OC12c	TB2310-ATM-OC12
ATM analysis for OC3c	TB2310-ATM-OC3
ATM analysis for DS3	TB2310-ATM-DS3
ATM analysis for DS3 and DS1	TB2310-ATM-DSN
Digital data services (DDS) analysis	TB2310-DDS
Secondary receiver for DS3 and STS-1 interfaces	TB2310-DUALRX
Remote control GUI	TB2310-REM
SDH testing at STM-16, STM-4, and STM-1	TB2310-SDH
DS3/DS1 script library	TB2310-ELE
SONET/DS3/DS1 script library	TB2310-OPT
Fractional T1	TB2310-FT1
GR-303 analysis	TB2310-GR303
Intelligent Line equipment	TB2310-ILE
Primary rate ISDN Signaling	TB2310-PRI
CPRI/TIMS	TB2310-SIG
VT100 emulation	TB2310-TIM
	TB2310-VT100

Optional accessories	
External battery charger	AC-31705
Hang-off strap	AC-31891
Replacement battery	BA-014081
Carrying case, large, soft	CC-44605
Carrying case, multimodule, soft	CC-451-58
Carrying case, hard	CC-45458
Rack mount for TestPad	RM-TTC2000

Calibration & Repair  
[www.raeservices.com](http://www.raeservices.com)

To receive a calibration and/or repair quote-RMA from R.A.E. Services Inc.  
 Click here>> [www.raeservices.com/services/quote.htm](http://www.raeservices.com/services/quote.htm)

**Hardware packages**

	<i>DS1</i>	<i>DS3</i>	<i>STS-1</i>	<i>OC3</i>	<i>OC12</i>	<i>OC48</i>	<i>OC48D</i>	<i>UIM</i>	<i>VT100</i>	<i>Dual Rx</i>
TB2310-P1	X	X	X					X	X	X
TB2310-P2	X	X	X	X				X	X	X
TB2310-P3	X	X	X	X	X			X	X	X
TB2310-P4	X							X	X	X
TB2310-P5	X	X						X	X	X
TB2310-P6	X	X	X	X	X	X		X	X	X
TB2310-P7	X	X	X	X	X		X	X	X	X

**Software packages**

	<i>FTI</i>	<i>TIM</i>	<i>SIG</i>	<i>ASP</i>	<i>ILE</i>	<i>DDS</i>	<i>PRI</i>	<i>OC12 ATM</i>	<i>OC3 ATM</i>	<i>DSN ATM</i>
TB2310-SW1	X	X	X	X						
TB2310-SW2	X	X	X	X	X	X				
TB2310-SW3	X	X	X	X						
TB2310-SW4	X	X	X	X	X	X				
TB2310-SW5									X	
TB2310-SW6								X		X

**Additional application modules available**

- FST-2510a High Speed Optical Analyzer
- FST-2416 SDH Services Module
- FST-2209 T1/T3 Services Module
- FST-2207 T1/T3 Wireless Services Module
- FST-2230 E1 Data Communications Module
- FST-2109 Copper Analyzer Module
- FST-2357 DSL Broadband Services Module
- FST-2802 Gigabit Ethernet Services Module
- BAT-2700 Base Station and Air Interface Test Module

**Acterna Advantage<sup>SM</sup>** adds value with global services and solutions. From basic instrument support for your field technicians to management of complex, computer-wide infrastructures, Acterna's service professionals are committed to helping you maximize your return on investment. Whatever your needs – product support, system management, education services, or business planning and consulting – we offer solutions that will give you the competitive edge. This is the foundation of Acterna Advantage.

Acterna is the world's largest provider of test and management solutions for optical transport, access and cable networks, and the second largest communications test company overall. Focused entirely on providing equipment, software, systems and services, Acterna helps customers develop, install, manufacture and maintain optical transport, access, cable, data/IP and wireless networks.

Calibration & Repair  
www.raeservices.com

To receive a calibration and/or repair quote-RMA from R.A.E. Services Inc.  
Click here>> [www.raeservices.com/services/quote.htm](http://www.raeservices.com/services/quote.htm)

Calibration & Repair  
[www.raeservices.com](http://www.raeservices.com)

**Worldwide  
Headquarters**

20400 Observation Drive  
Germantown, Maryland  
20876-4023  
USA

Acterna is present in more  
than 80 countries. To find  
your local sales office go to:  
[www.acterna.com](http://www.acterna.com)

**Regional Sales  
Headquarters**

**North America**  
20400 Observation Drive  
Germantown, Maryland  
20876-4023  
USA  
Toll Free: +1 866 ACTERNA  
Toll Free: +1 866 228 3762  
Tel: +1 301 353 1560x2850  
Fax: +1 301 353 9216

**Latin America**  
Av. Eng. Luis Carlos Berrini  
936/8ª e 9ª andares  
04571-000 São Paulo  
SP-Brazil  
Tel: +55 11 5503 3800  
Fax: +55 11 5505 1598

**Asia Pacific**  
42 Clarendon Street  
PO Box 141  
South Melbourne  
Victoria 3205  
Australia  
Tel: +61 3 9690 6700  
Fax: +61 3 9690 6750

**Western Europe**  
Arbachtalstrasse 6  
72800 Eningen u.A.  
Germany  
Tel: +49 7121 86 2222  
Fax: +49 7121 86 1222

**Eastern Europe,  
Middle East & Africa**  
Elisabethstrasse 36  
2500 Baden  
Austria  
Tel: +43 2252 85 521 0  
Fax: +43 2252 80 727

1st Neopalimovskiy Per.  
15/7 (4th floor)  
RF 119121 Moscow  
Russia  
Tel: +7 095 248 2508  
Fax: +7 095 248 4189

© Copyright 2002  
Acterna, LLC.  
All rights reserved.

Acterna, The Keepers of  
Communications, and  
its logo are trademarks  
of Acterna, LLC. All  
other trademarks and  
registered trademarks  
are the property of their  
respective owners. Major  
Acterna operations sites  
are ISO 9001 registered.

Note: Specifications,  
terms and conditions  
are subject to change  
without notice.



NIST, ISO, IEC, ANSI, NCSL, MIL-STD by [www.raeservices.com](http://www.raeservices.com)